

Inductive Sensors **AC-Sensors**



Product features

- Metric types: M12 – M30
- Voltage range: from 20 V AC to 265 V AC
- Sensing distance: 2 mm – 20 mm
- Switching function: NO contact/NC contact
- Enclosure material: plastic, brass

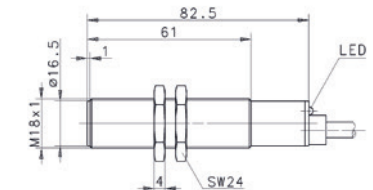
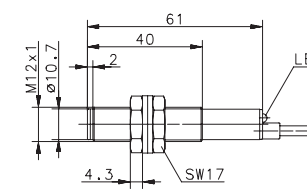
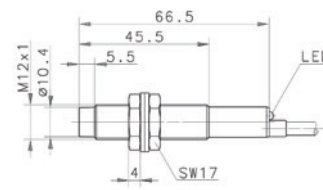
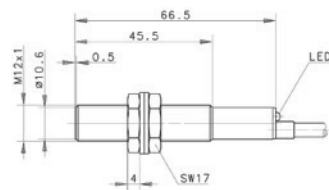
Options

- Cable and connector assembly
- The enclosures can be adapted
- Product adaptations and modifications
- Customized development

INDUCTIVE SENSORS AC 2-WIRE Type M12, M18



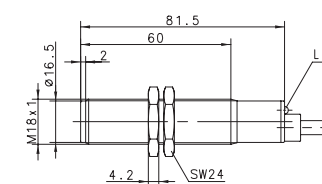
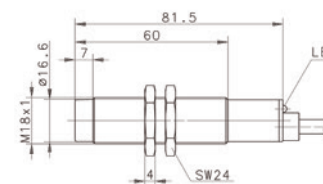
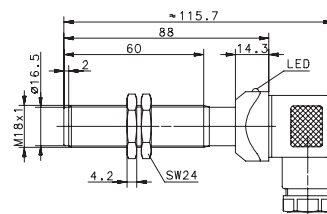
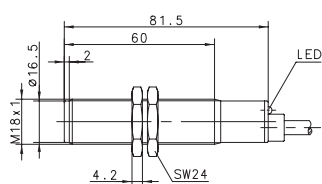
Type	M12	M12	M12	M18
Enclosure material	CuZn39Pb3	CuZn39Pb3	PA, red	CuZn39Pb3
Type of installation	flush	non-flush	non-flush	flush
Nominal sensing distance	2 mm	4 mm	4 mm	5 mm
Type of connection	Cable 2 m	Cable 2 m	Cable 2 m	Cable 2 m
Special feature				
2-wire AC NO contact	6503503001 KIB-M12AS/002-L2	6503504001 KIN-M12AS/004-L2	6503519001 KIN-T12AS/004-L2	6503505004 KIB-M18AS/005-L2
2-wire AC NC contact		6503404001 KIN-M12AÖ/004-L2		6503405001 KIB-M18AÖ/005-L2
Technical data				
Rated operating voltage range	U_b 76–250 V AC	76–250 V AC	76–250 V AC	20–250 V AC
Rated operating current	I_e ≤ 200 mA	≤ 200 mA	≤ 200 mA	≤ 400 mA
Max. switching voltage	F ≈ 10 Hz	≈ 10 Hz	≈ 25 Hz	≈ 10 Hz
Short circuit-protection	–	–	–	–
Function/operating voltage indicator	LED/–	LED/–	LED/–	LED/–
Mechanical data				
Ambient temperature (min/max)	–25°C/+70°C	–25°C/+70°C	–25°C/+70°C	–25°C/+70°C
Protection class in accordance with IEC 529, EN 60529	IP67	IP67	IP67	IP67
Connection	2 x 0.14 mm ²	2 x 0.14 mm ²	2 x 0.14 mm ²	2 x 0.5 mm ²



INDUCTIVE SENSORS AC 2-WIRE Type M18



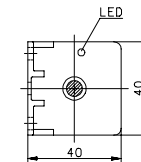
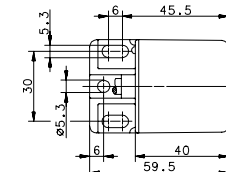
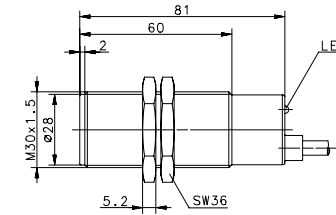
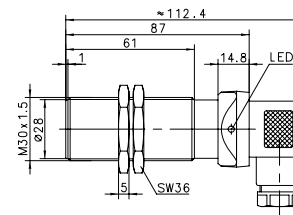
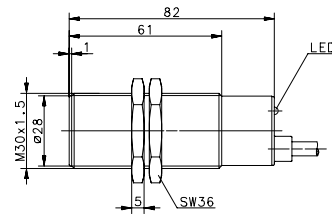
Type	M18	M18	M18	M18
Enclosure material	PA, red	PA, red	CuZn39Pb3	PA, red
Type of installation	flush	flush	non-flush	non-flush
Nominal sensing distance	5 mm	5 mm	8 mm	8 mm
Type of connection	Cable 2 m	Connector	Cable 2 m	Cable 2 m
Special feature				
2-wire AC NO contact	6503520697 KIB-T18AS/005-L2		6503506002 KIN-M18AS/008-L2	6503521705 KIN-T18AS/008-L2
2-wire AC NC contact		6503438976 KIB-T18AÖ/005-LSD	6503406001 KIN-M18AÖ/008-L2	6503421704 KIN-T18AÖ/008-L2
Technical data				
Rated operating voltage range	U_b 24–250 V AC	20–250 V AC	20–250 V AC	24–250 V AC
Rated operating current	I_e ≤ 200 mA	400 mA	≤ 400 mA	≤ 200 mA
Max. switching voltage	F ≈ 10 Hz	≈ 10 Hz	≈ 10 Hz	≈ 10 Hz
Short circuit-protection	–	–	–	–
Function/operating voltage indicator	LED/–	LED/–	LED/–	LED/–
Mechanical data				
Ambient temperature (min/max)	–25°C/+70°C	–25°C/+70°C	–25°C/+70°C	–25°C/+70°C
Protection class in accordance with IEC 529, EN 60529	IP67	IP65	IP67	IP67
Connection	2 x 0.5 mm ²	Plug connector DIN EN 175301-803	2 x 0.5 mm ²	2 x 0.5 mm ²



INDUCTIVE SENSORS AC 2-WIRE Type M30



Type	M30	M30	M30	M30
Enclosure material	CuZn39Pb3	CuZn39Pb3	PA, red	PA, red/black
Type of installation	flush	flush	flush	non-flush
Nominal sensing distance	10 mm	10 mm	10 mm	15 mm
Type of connection	Cable 2 m	DIN Connector	Cable 2 m	Cable 3 m
Special feature				
2-wire AC NO contact	6503507378 KIB-M30AS/010-L2	6503535960 KIB-M30AS/010-LSD	6503522713 KIB-T30AS/010-L2	6503581002 KIN-N40AS/015-L3
2-wire AC NC contact	6503407240 KIB-M30AÖ/010-L2	6503435959 KIB-M30AÖ/010-LSD		
Technical data				
Rated operating voltage range	U_b 20–250 V AC	20–265 V AC	48–250 V AC	20–265 V AC
Rated operating current	I_e ≤ 400 mA	≤ 500 mA	≤ 400 mA	≤ 500 mA
Max. switching voltage	F ≈ 10 Hz	20 Hz	≈ 20 Hz	≈ 10 Hz
Short circuit-protection	–	–	–	–
Function/operating voltage indicator	LED/–	LED/–	LED/–	LED/–
Mechanical data				
Ambient temperature (min/max)	–25°C/+70°C	–25°C/+70°C	–25°C/+70°C	–25°C/+70°C
Protection class in accordance with IEC 529, EN 60529	IP67	IP65	IP67	IP67
Connection	2 x 0.5 mm ²	Plug connector DIN EN 175301-803	2 x 0.5 mm ²	2 x 0.5 mm ²



INDUCTIVE SENSORS AC 2-WIRE Type M30, Ø 34, 32x26x12 mm



Type	M30	M30	Ø 34	32 x 26 x 12 mm
Enclosure material	CuZn39Pb3	PA, red	PBT, red	PBT, black
Type of installation	non-flush	non-flush	non-flush	non-flush
Nominal sensing distance	15 mm	15 mm	20 mm	4 mm
Type of connection	Cable 2.5 m	Cable 2.5 m	Cable 2 m	Cable 2 m
Special feature				
2-wire AC NO contact	6503508246 KIN-M30AS/015-L2,5	6503523956 KIN-T30AS/015-L2,5	6503515001 KIN-R34AS/020-L2	6503584005 KIN-E40AS/004-L2
2-wire AC NC contact				
Technical data				
Rated operating voltage range	U_b 20–250 V AC	20–250 V AC	20–250 V AC	20–250 V AC
Rated operating current	I_e ≤ 400 mA	≤ 400 mA	≤ 400 mA	≤ 300 mA
Max. switching voltage	F ≈ 10 Hz	≈ 10 Hz	≈ 10 Hz	≈ 10 Hz
Short circuit-protection	–	–	–	–
Function/operating voltage indicator	LED/–	LED/–	LED/–	LED/–
Mechanical data				
Ambient temperature (min/max)	–25°C/+70°C	–25°C/+70°C	–25°C/+70°C	–25°C/+70°C
Protection class in accordance with IEC 529, EN 60529	IP67	IP67	IP67	IP67
Connection	2 x 0.5 mm ²	2 x 0.5 mm ²	2 x 0.5 mm ²	2 x 0.5 mm ²

